

# Model 1044C-54 Series II TELEHANDLER



## Performance

### Rated Capacity

10,000 lb (4,536 kg)

### Maximum Lift Height

54 ft (16.5 m)

### Frame Leveling

10 degrees

### Lift Speed (boom retracted, no load)

Up: 15.6 sec

Down: 14.6 sec

### Boom Speed (no load)

Extend: 15.2 sec

Retract: 11.3 sec

### Travel Speed Forward

22 mph (35 kmph) max.

### Drawbar Pull (loaded)

21,700 lb (9,843 kg)

### Operating Weight Without Carriage and Forks

31,350 lb (14,220 kg)

### Forward Reach

45 ft (13.7 m)

### Horizontal Load Placement

80 in. (2.0 m)

## Standard Specifications

### Engine

Make and Model	John Deere 4045TF275
Fuel	No. 2 Diesel
Cycles	4
No. of Cylinders	4
Displacement	276 cu in (4.5 L)
Rated Speed	2,500 rpm
Max. Gross BHP	115 hp (85 kW)
Fuel Tank	38 gal (144 L)
Engine Block Heater	

### Engine Filters

Two-stage dry air cleaner – centrifugal pre-cleaner with continuous dust ejector plus replaceable primary dry filter element and safety element.

Visual service indicator.

Replaceable spin-on fuel filter. Full-flow replaceable spin-on engine oil filter.

### Electrical System

Voltage: 12V

Alternator: 95 amp

Battery: 1000 cold cranking amps at 0°F

### Transmission

Modulated powershift.

4-speed forward and 3-speed reverse.

### Axles

Full-time planetary 4-wheel drive.

Oscillating rear axle with stabil-TRAK™ system.

### Service Brakes

Hydraulically actuated inboard wet disc brakes.

### Parking Brakes

Spring applied hydraulic release brake with transmission declutch feature.

### Tires

Standard: Hydro fill 14.00 x 24 – 12 ply

### Cab

Certified ROPS/FOPS structure.

Steering wheel mounted horn.

Rear view mirrors.

### Steering

4-wheel circle, 4-wheel crab, 2-wheel front.

### Instruments

Hydraulic oil temperature, fuel level, tachometer, and hourmeter gauges.

Warning indicators for transmission oil temperature, hydraulic oil temperature, engine oil pressure, alternator charging, air filter restriction, hydraulic oil filter restriction, and low brake pressure.

Indicators for parking brake and RAS System.

### Controls

Multi-function, fully proportional pilot operated joystick controls for boom functions, carriage tilt, auxiliary control, frame leveling, and horizontal load placement system.

### Hydraulic System

Load sensing dual gear pumps.

33.5 gal (127 L) system capacity.

### Front Outriggers

Axle mounted high clearance outriggers allow frame leveling without changing stance.

### Auxiliary Hydraulics

Used for all attachments equipped with cylinders or other hydraulic components.

Consists of valves, controls and hydraulic lines.

## Accessories & Options

### Enclosed All Weather Cab

### Basic Work Lights

### Complete Road Lights

### Rotating Beacon

### Strobe Light

### Suspension Seat

### Tire Options

Foam-filled

Radial

Rock Lug

### Second Auxiliary Hydraulic Line

### Hydraulic Oil Cooler

## Attachments

### Standard Carriage

50 in. (1.3 m) or 74 in. (1.9 m)

### ± 10° Side Tilt Carriage

50 in. (1.3 m) or 74 in. (1.9 m)

### ± 45° Swing Carriage

72 in. (1.8 m)

### Pallet Forks

2 x 5 x 48 in.

(51 mm x 127 mm x 1.2 m)

### Lumber Forks

1.75 x 7 x 60 in.

(45 mm x 178 mm x 1.5 m)

### Block Forks

2 x 2 x 48 in.

(51 mm x 51 mm x 1.2 m)

### Truss Boom With or Without Winch

10 ft (3.0 m)

### 8 ft (2.4 m) Tower With

### 50 in. (1.3 m) Tilt Carriage

### Light Material Bucket

1.25 cu yd (0.95 m<sup>3</sup>) capacity

96 in. (2.4 m) wide

### Concrete Bucket

### Sweeper

Hydraulic driven

### Hydraulic Fork Position Carriage

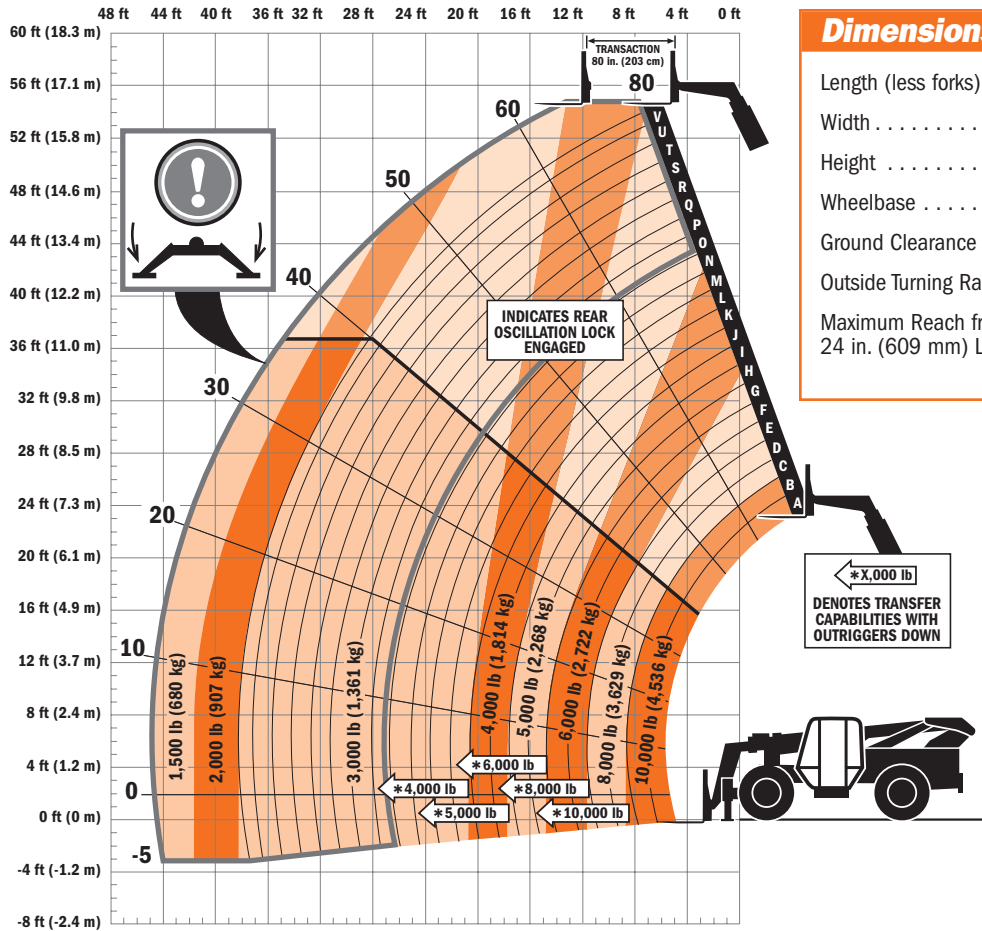
50 in. (1.3 m)

Single and dual fork options

### Earth Auger



# Model 1044C-54 Series II TELEHANDLER



CAPACITIES SHOWN DEPICT FULL BOOM EXTENSION PRIOR TO TRANSFER. AT FULL TRANSFER EXTENSION, CAPACITIES AT ANY DISTANCE OUT ARE 70% OF RETRACTED TRANSFER VALUES.

### IMPORTANT

Rated lift capacities shown are with machine equipped with carriage and pallet forks. The machine must be level on a firm surface with undamaged, properly inflated tires. Machine specifications and stability are based on rated lift capacities at specific boom angles and boom lengths. (If specifications are critical, the proposed application should be discussed with your dealer.)

DO NOT exceed rated lift capacity loads, as unstable and dangerous machine conditions will result.

DO NOT tip the machine forward to determine the allowable load.

Use only JLG approved attachments with proper material handler model/attachment load capacity charts displayed in the operator's cab. OSHA requires all rough terrain forklift operators be trained according to OSHA 29 CFR 1910.178 (1).

*Due to continuous product improvements, JLG Industries reserves the right to make specification and/or equipment changes without prior notification. This machine meets or exceeds ASME B56.6-2002 as originally manufactured for intended applications.*

Form No.: SS-L1044C-54-0405-10M  
Part No.: 3132504  
R100503  
Printed in USA



**JLG Industries, Inc.**  
1 JLG Drive  
McConnellsburg, PA 17233-9533  
Telephone 717-485-5161  
Toll-free in US 877-JLG-LIFT  
Fax 717-485-6417  
www.jlg.com